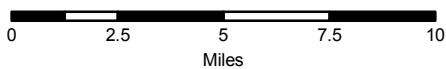


# Hennepin County

## Phillips Neighborhood



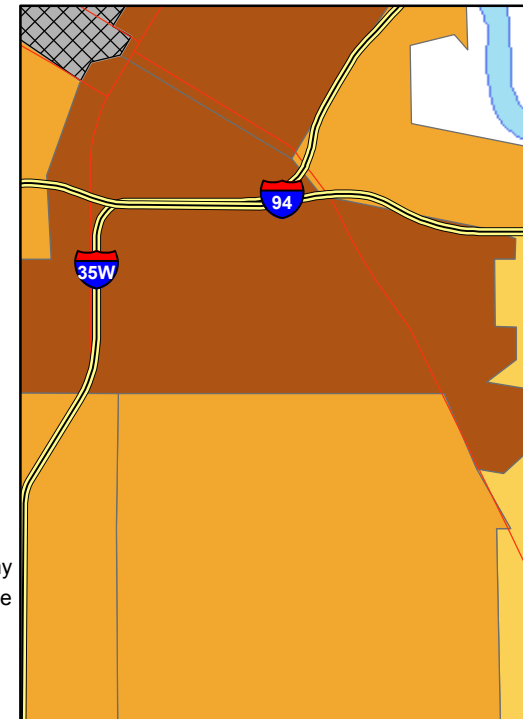
<http://gis.leg.mn>  
March 2008

Base data and features used on this map are derived from the 2000 TIGER files prepared by the U.S. Census Bureau.  
EBL & Asthma data provided by Minnesota Department of Health  
Arsenic data provided by the U.S. Environmental Protection Agency.

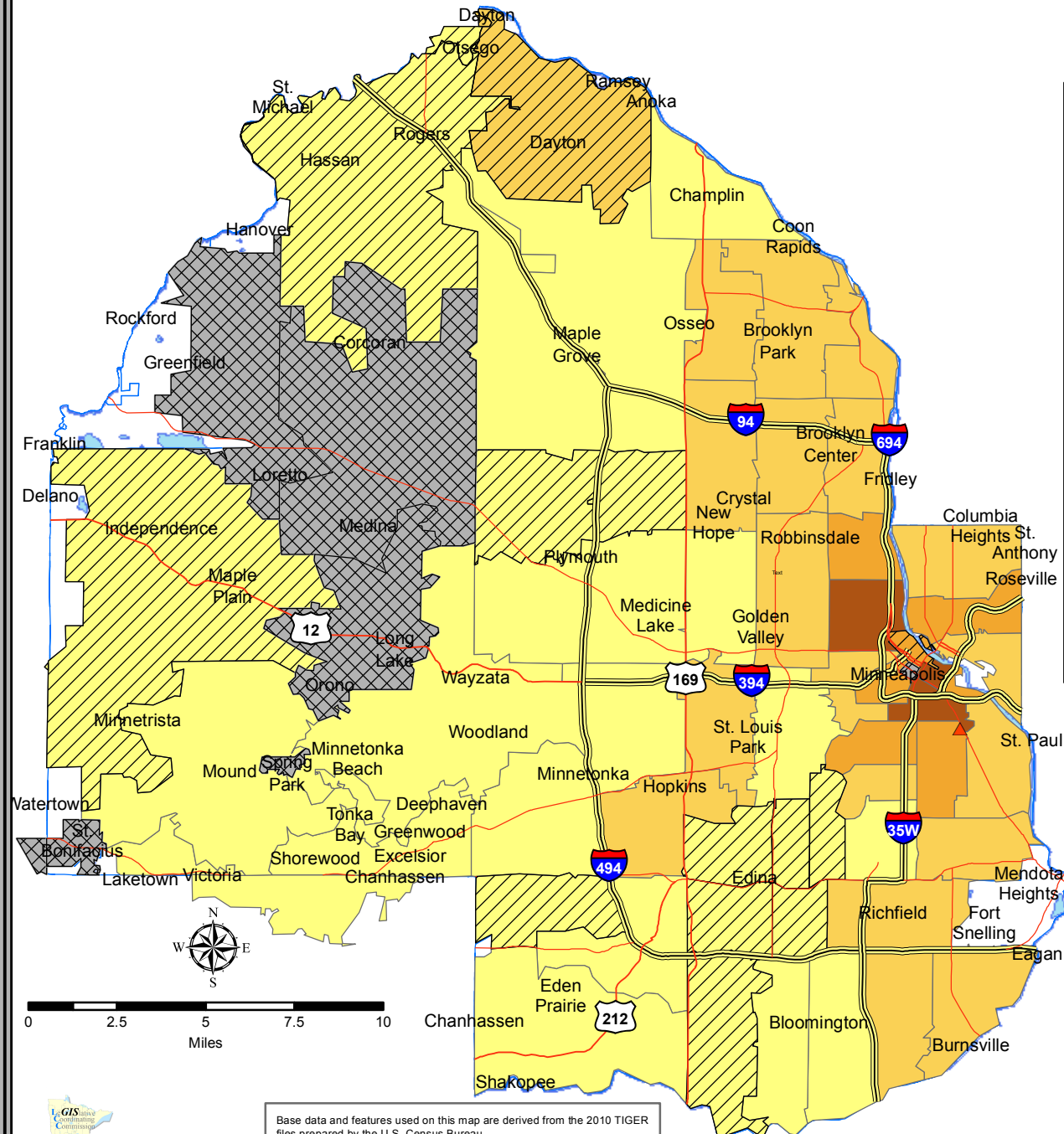
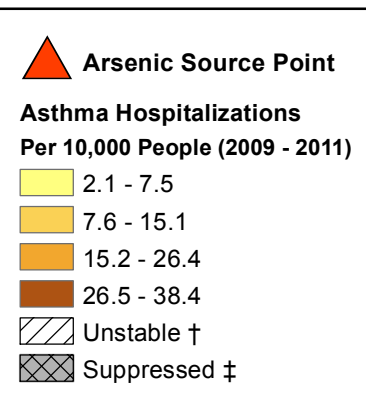
# Hennepin County

by Asthma Hospitalization Rate per 10,000 People

## Phillips Neighborhood



0 0.25 0.5 1  
Miles



0 2.5 5 7.5 10  
Miles



<http://gis.leg.mn>

October 2013

Base data and features used on this map are derived from the 2010 TIGER files prepared by the U.S. Census Bureau.

Asthma data provided by Minnesota Department of Health

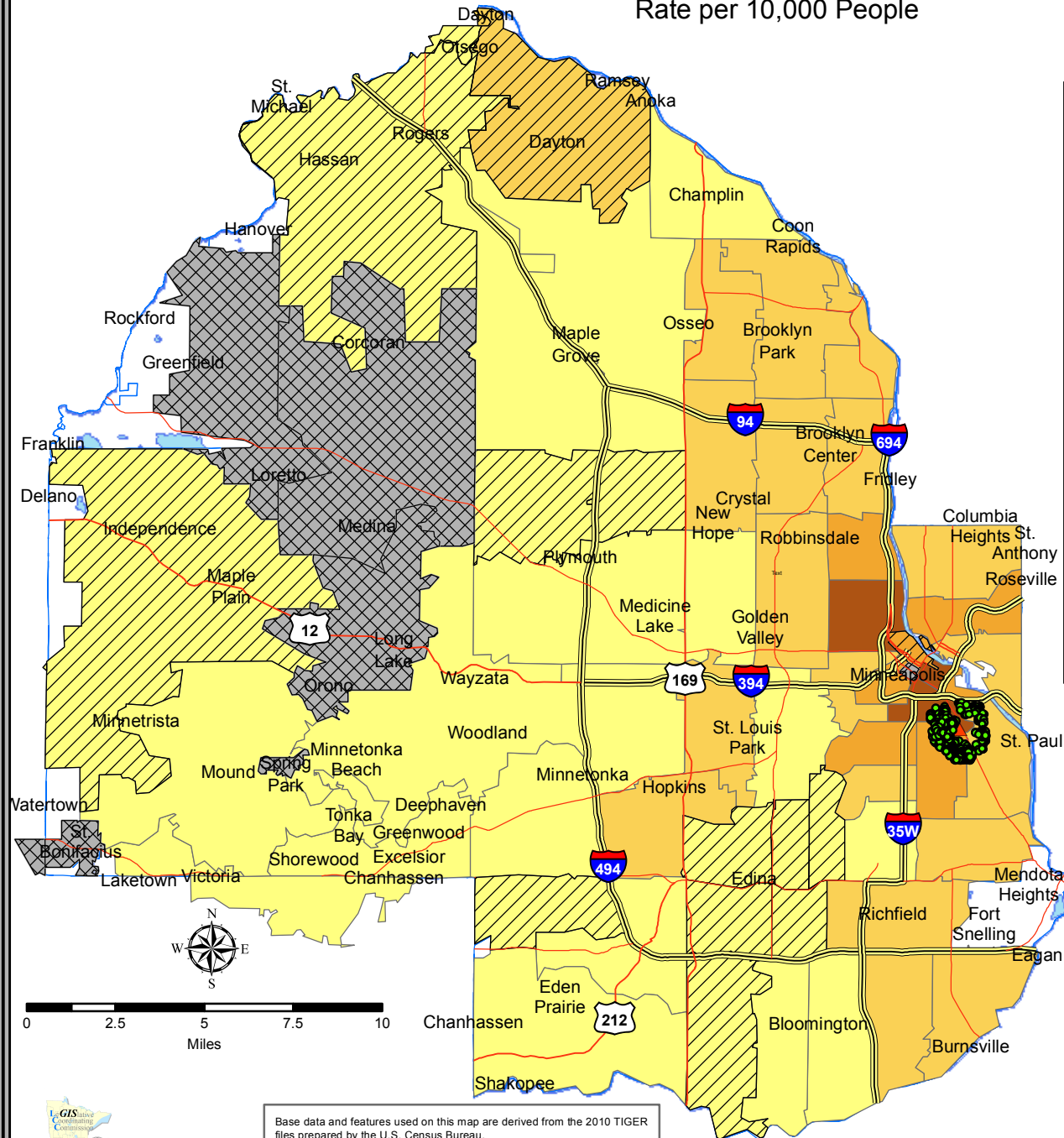
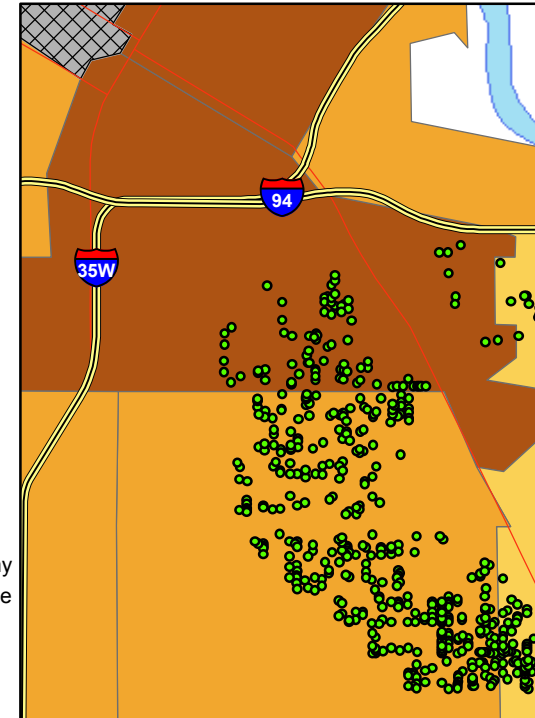
† Unstable rates are based on 20 or less hospitalizations

‡ Suppressed rates are based on less than 5 hospitalizations

# Hennepin County

by Arsenic & Asthma Hospitalization  
Rate per 10,000 People

## Phillips Neighborhood



• Arsenic Cleanup Action Taken

▲ Arsenic Source Point

**Asthma Hospitalizations  
Per 10,000 People (2009 - 2011)**

2.1 - 7.5

7.6 - 15.1

15.2 - 26.4

26.5 - 38.4

Unstable †

Suppressed ‡

Base data and features used on this map are derived from the 2010 TIGER files prepared by the U.S. Census Bureau.

Asthma data provided by Minnesota Department of Health

† Unstable rates are based on 20 or less hospitalizations

‡ Suppressed rates are based on less than 5 hospitalizations



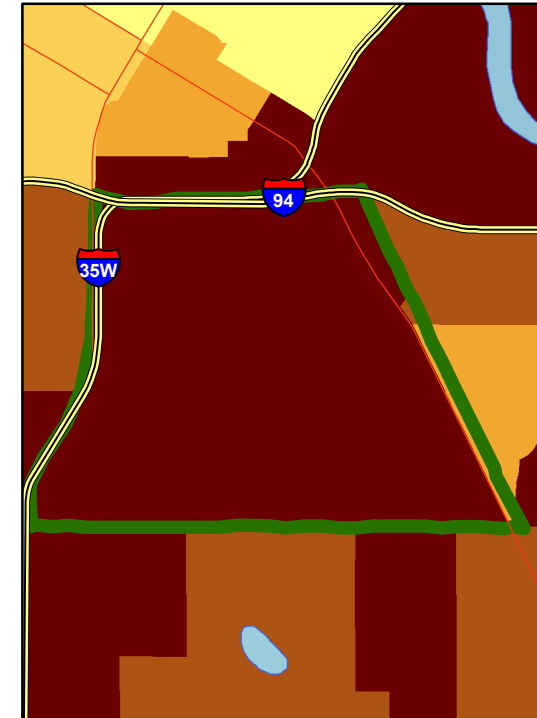
<http://gis.leg.mn>

October 2013

# Hennepin County

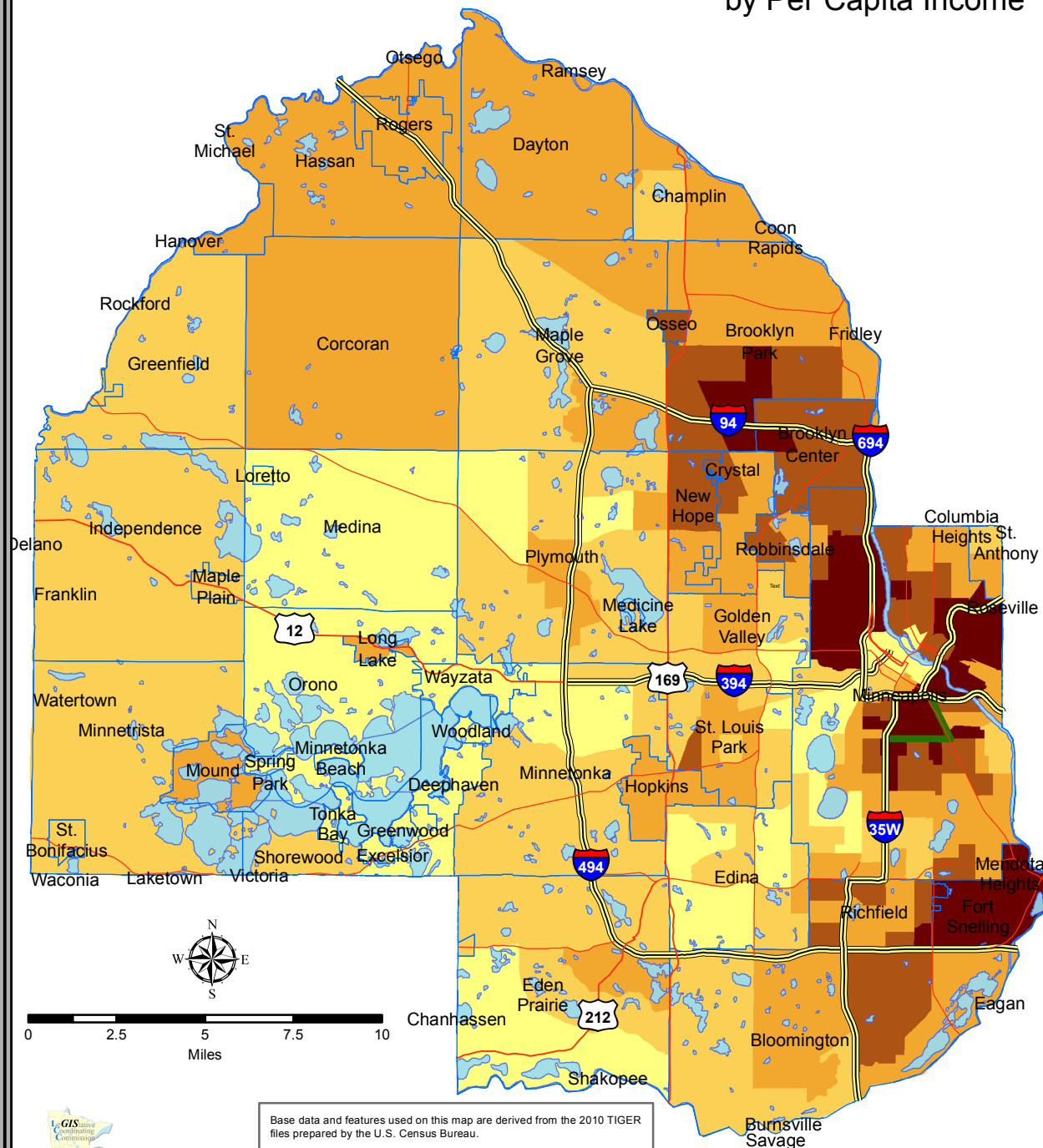
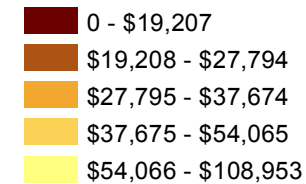
## by Per Capita Income

### Phillips Neighborhood



0 0.225 0.45  
Miles

#### Per Capita Income



Base data and features used on this map are derived from the 2010 TIGER files prepared by the U.S. Census Bureau.

EBL & Asthma data provided by Minnesota Department of Health

\* Asthma data is an average annual rate between 2004 and 2006.  
If 20 or fewer cases occurred, the rate was not calculated.

Arsenic data provided by the U.S. Environmental Protection Agency.



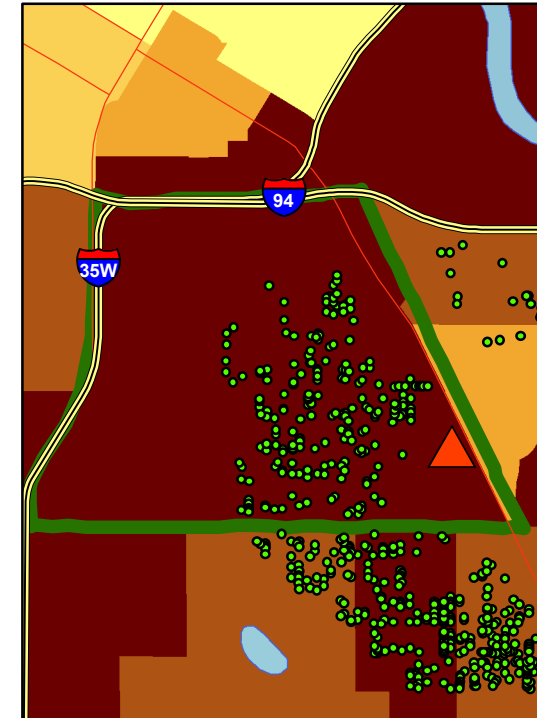
<http://gis.leg.mn>

July 2012

# Hennepin County

## by Arsenic & Per Capita Income

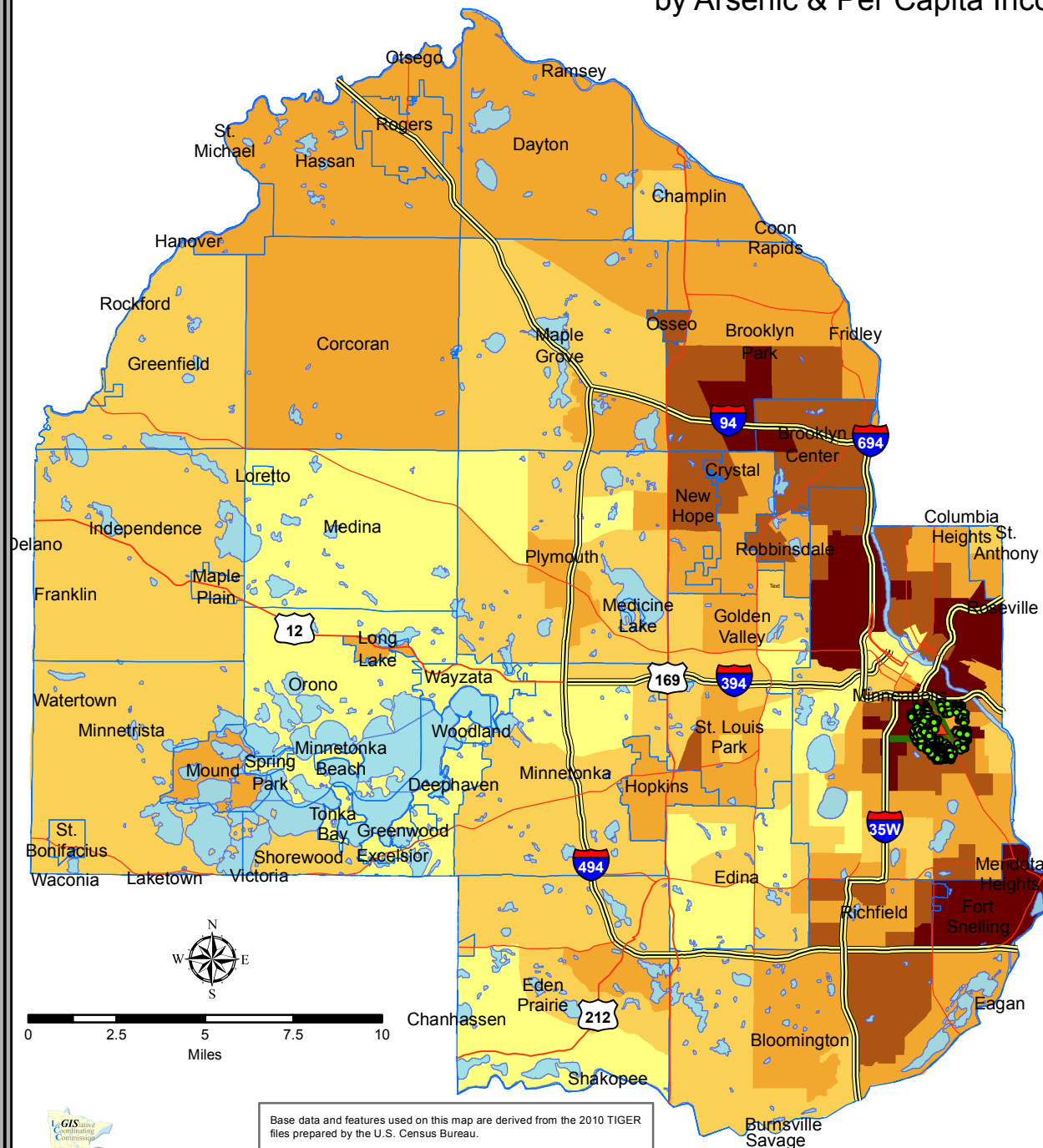
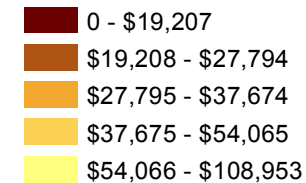
### Phillips Neighborhood



● Arsenic Cleanup Action Taken

▲ Arsenic Source Point

#### Per Capita Income



Base data and features used on this map are derived from the 2010 TIGER files prepared by the U.S. Census Bureau.

EBL & Asthma data provided by Minnesota Department of Health

\* Asthma data is an average annual rate between 2004 and 2006. If 20 or fewer cases occurred, the rate was not calculated.

Arsenic data provided by the U.S. Environmental Protection Agency.



<http://gis.leg.mn>

July 2012



# Hennepin County

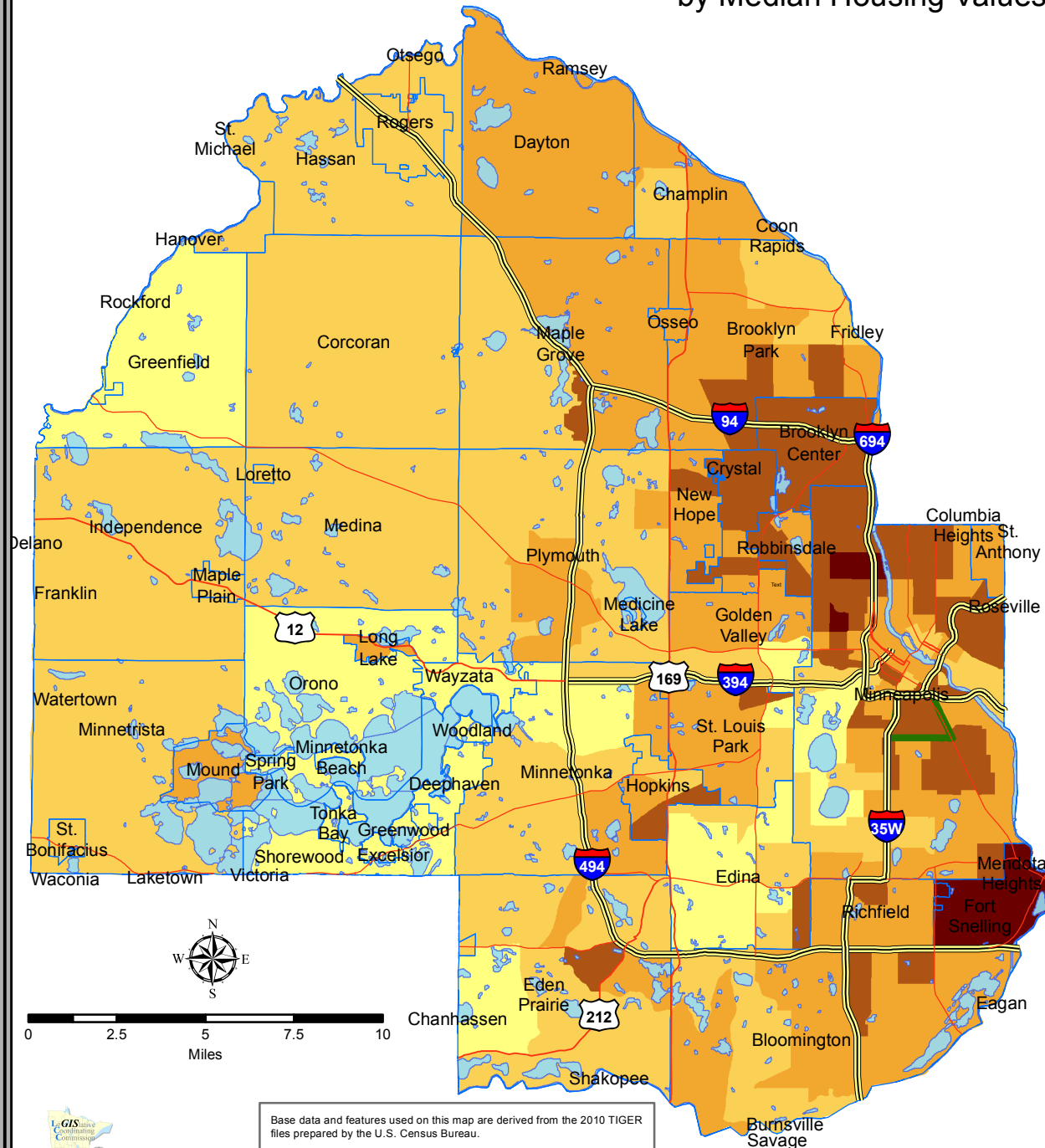
## by Median Housing Values

### Phillips Neighborhood



0 0.25 0.5 1  
Miles

### Median Housing Values



0 2.5 5 7.5 10  
Miles



<http://gis.leg.mn>

July 2012

Base data and features used on this map are derived from the 2010 TIGER files prepared by the U.S. Census Bureau.

EBL & Asthma data provided by Minnesota Department of Health

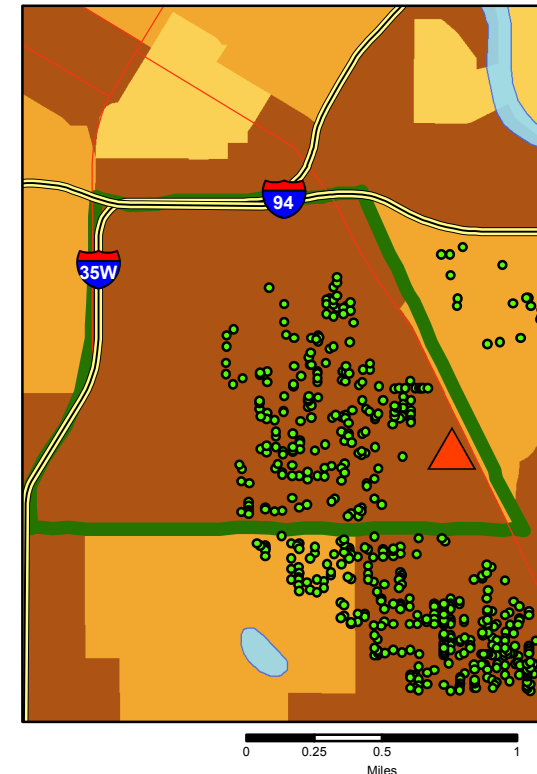
\* Asthma data is an average annual rate between 2004 and 2006.  
If 20 or fewer cases occurred, the rate was not calculated.

Arsenic data provided by the U.S. Environmental Protection Agency.

# Hennepin County

## by Arsenic & Median Housing Values

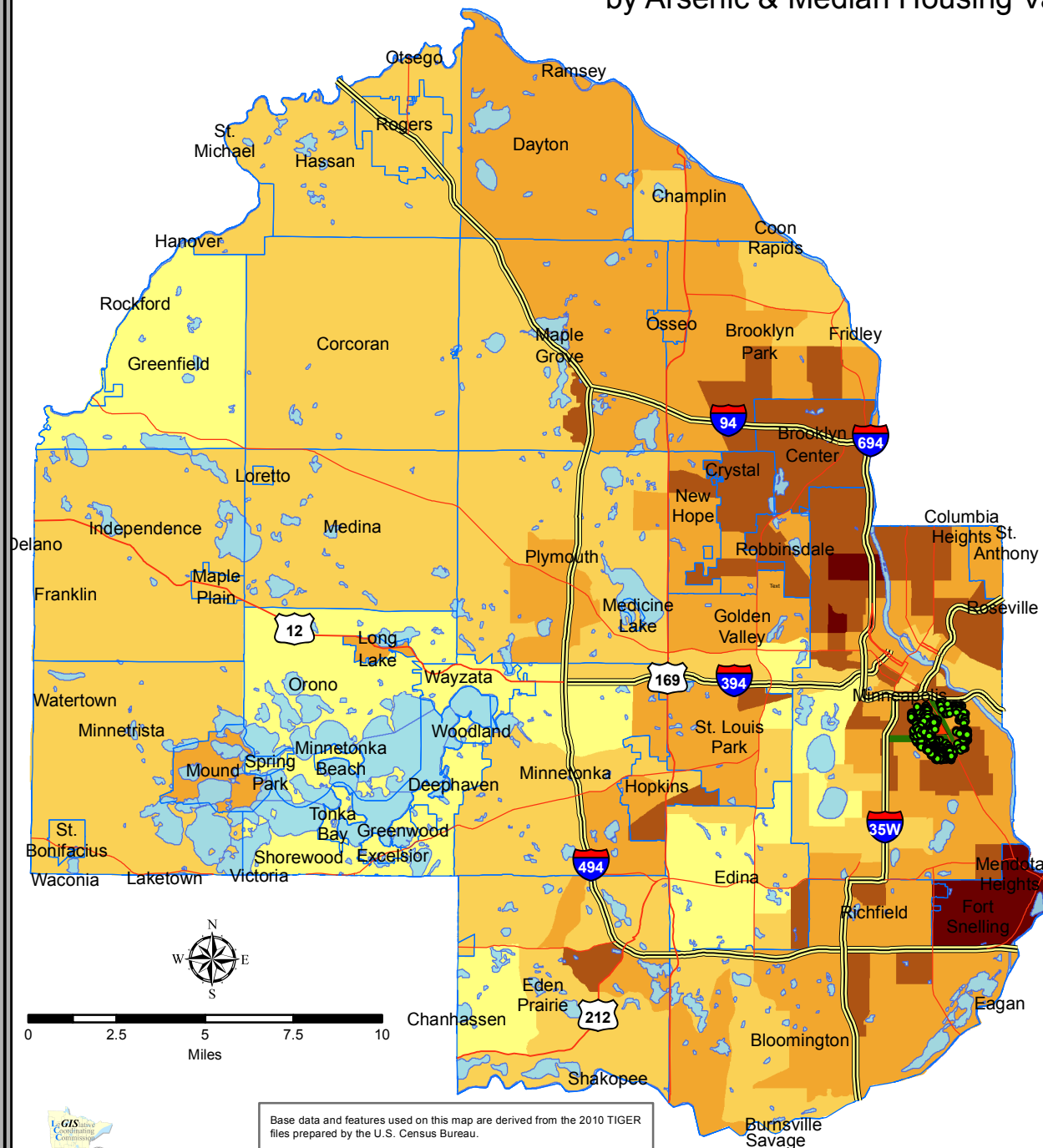
### Phillips Neighborhood



● Arsenic Cleanup Action Taken

▲ Arsenic Source Point

#### Median Housing Values



<http://gis.leg.mn>

July 2012

Base data and features used on this map are derived from the 2010 TIGER files prepared by the U.S. Census Bureau.

EBL & Asthma data provided by Minnesota Department of Health

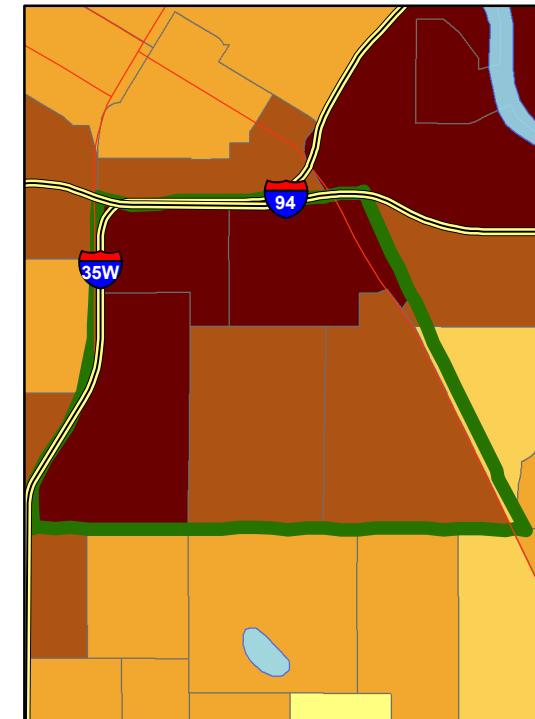
\* Asthma data is an average annual rate between 2004 and 2006. If 20 or fewer cases occurred, the rate was not calculated.

Arsenic data provided by the U.S. Environmental Protection Agency.

# Hennepin County

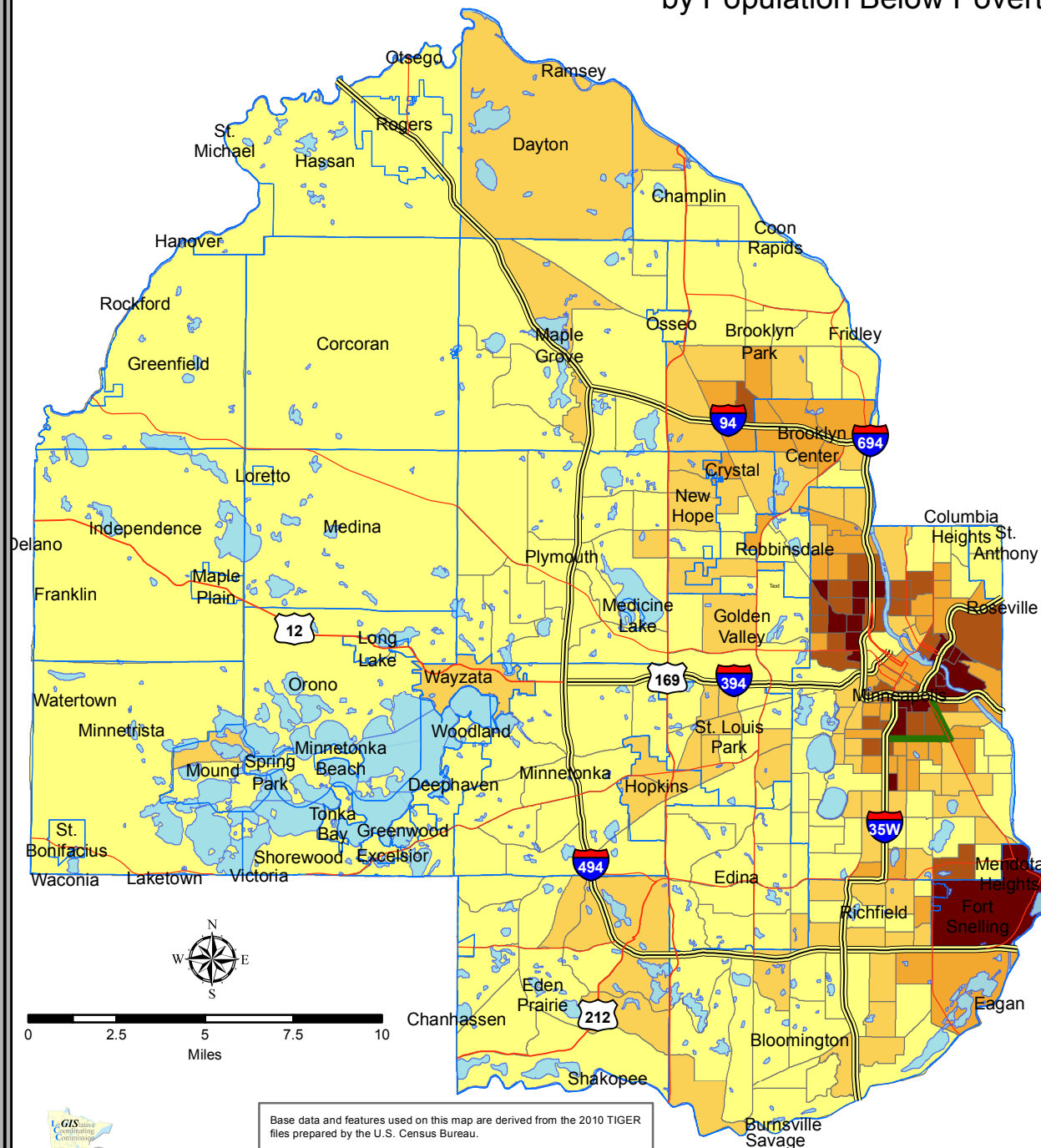
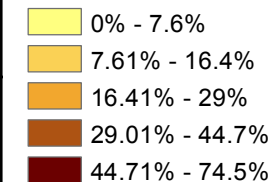
## by Population Below Poverty

### Phillips Neighborhood



0 0.25 0.5 1  
Miles

### Population Below Poverty



<http://gis.leg.mn>

July 2012

Base data and features used on this map are derived from the 2010 TIGER files prepared by the U.S. Census Bureau.

EBL & Asthma data provided by Minnesota Department of Health

\* Asthma data is an average annual rate between 2004 and 2006. If 20 or fewer cases occurred, the rate was not calculated.

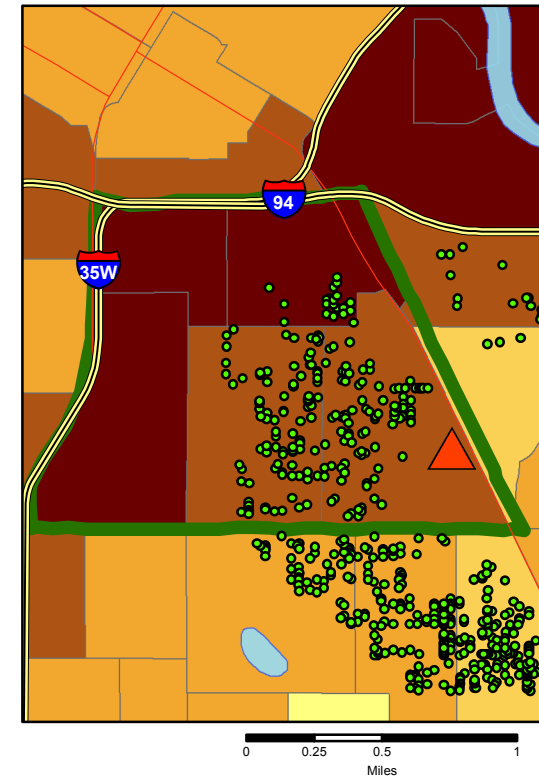
Arsenic data provided by the U.S. Environmental Protection Agency.



# Hennepin County

## by Arsenic & Population Below Poverty

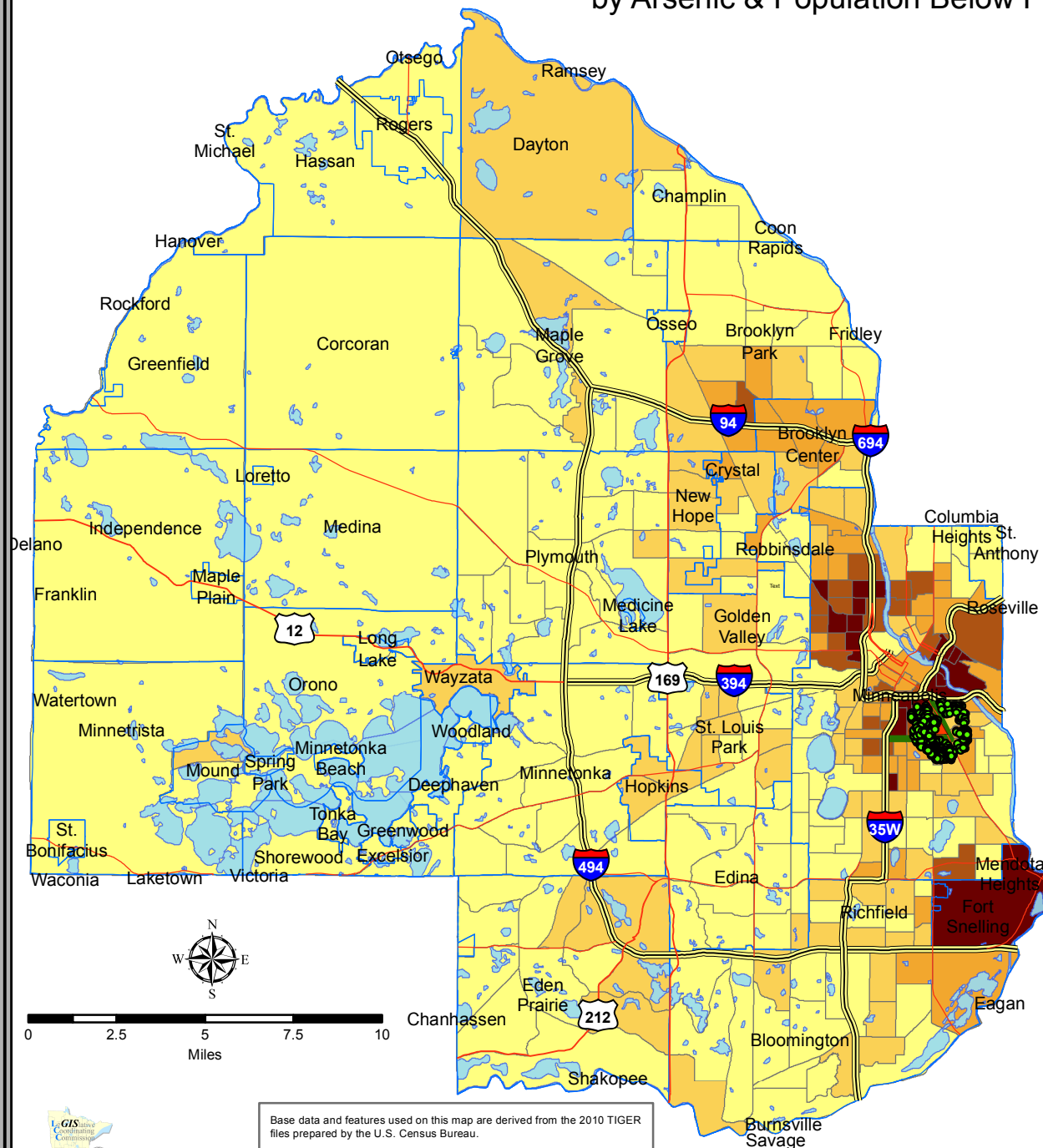
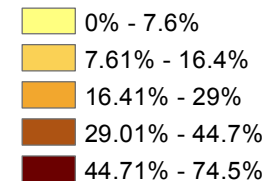
### Phillips Neighborhood



● Arsenic Cleanup Action Taken

▲ Arsenic Source Point

#### Population Below Poverty



<http://gis.leg.mn>

July 2012

Base data and features used on this map are derived from the 2010 TIGER files prepared by the U.S. Census Bureau.

EBL & Asthma data provided by Minnesota Department of Health

\* Asthma data is an average annual rate between 2004 and 2006. If 20 or fewer cases occurred, the rate was not calculated.

Arsenic data provided by the U.S. Environmental Protection Agency.

# Hennepin County

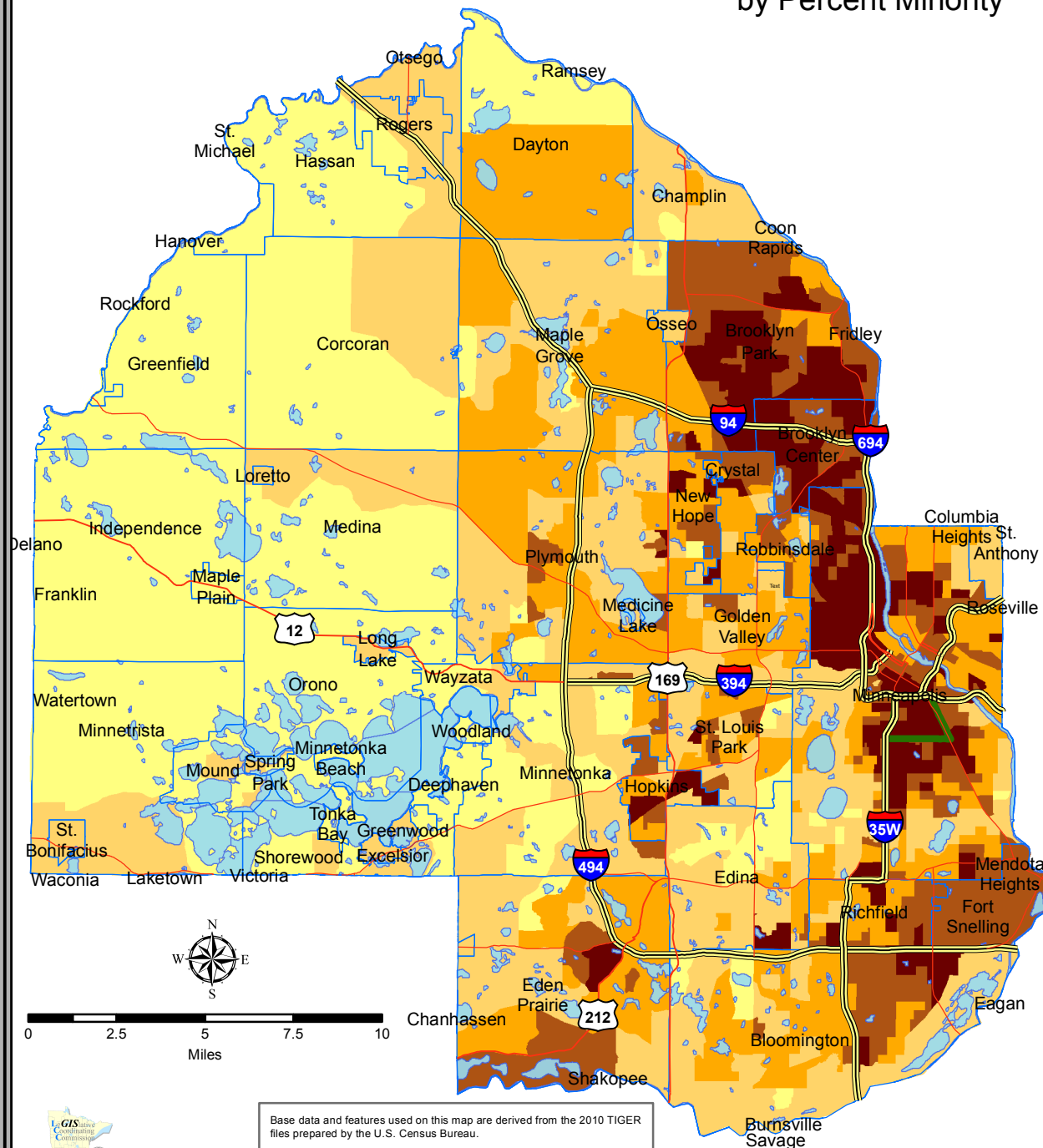
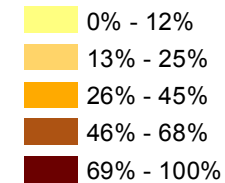
## by Percent Minority

### Phillips Neighborhood



0 0.25 0.5  
Miles

#### Percent Minority



0 2.5 5 7.5 10  
Miles



<http://gis.leg.mn>

July 2012

Base data and features used on this map are derived from the 2010 TIGER files prepared by the U.S. Census Bureau.

EBL & Asthma data provided by Minnesota Department of Health

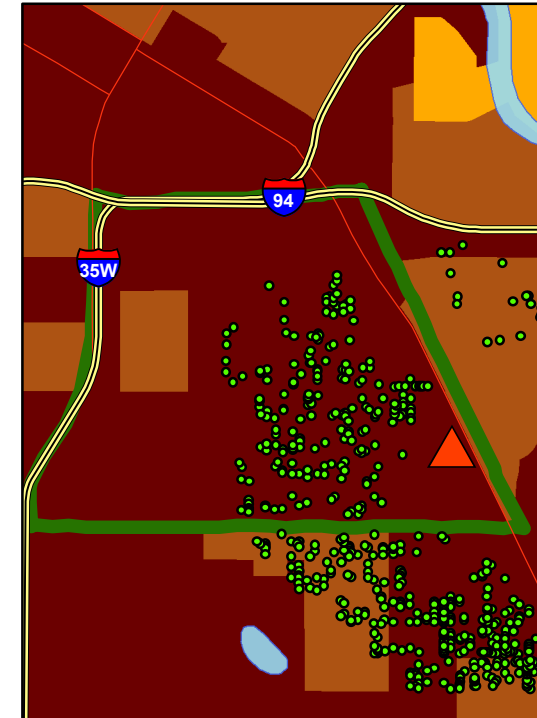
\* Asthma data is an average annual rate between 2004 and 2006.  
If 20 or fewer cases occurred, the rate was not calculated.

Arsenic data provided by the U.S. Environmental Protection Agency.

# Hennepin County

## by Arsenic & Percent Minority

### Phillips Neighborhood

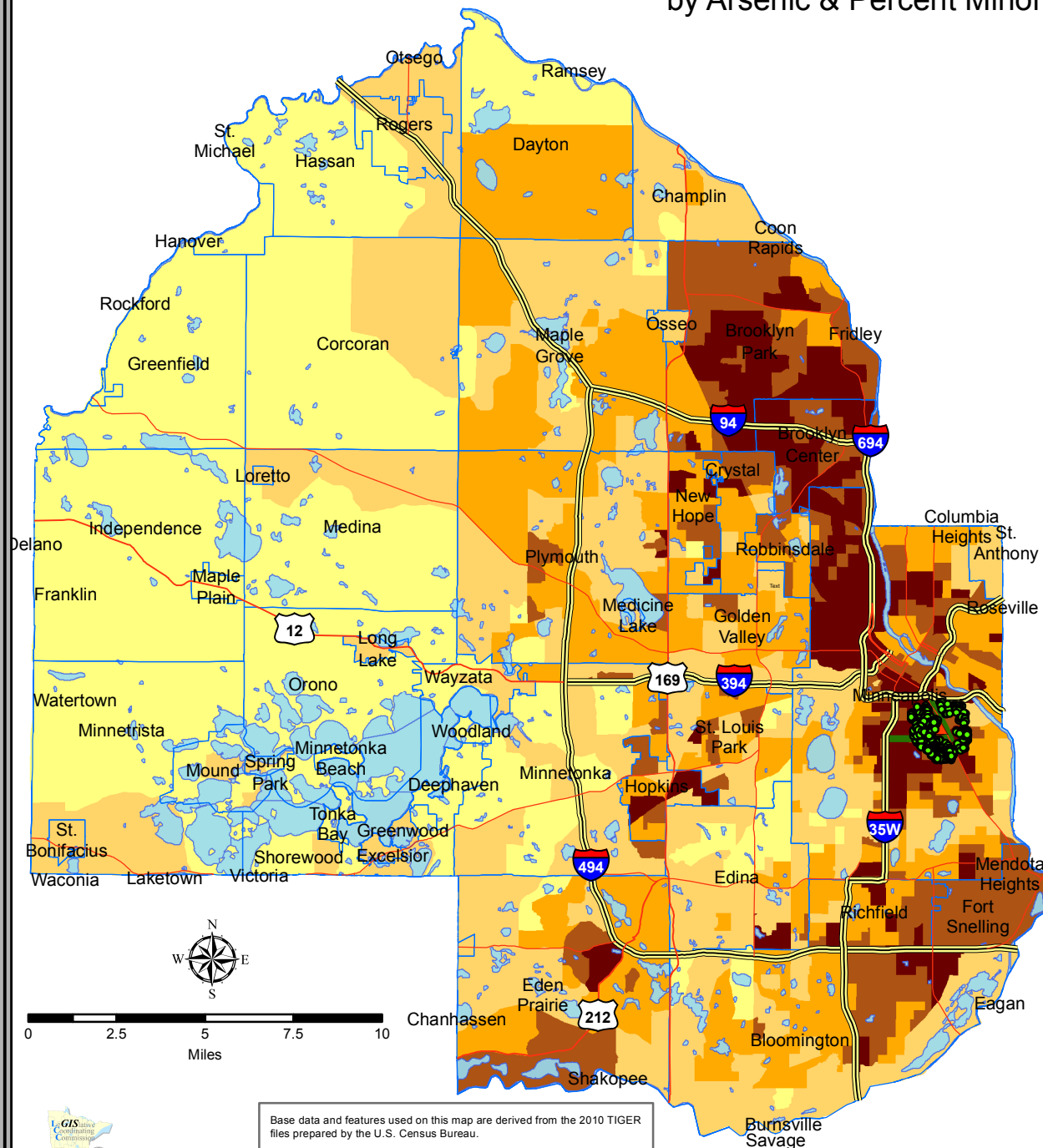
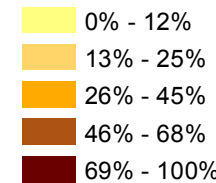


0 0.25 0.5  
Miles

● Arsenic Cleanup Action Taken

▲ Arsenic Source Point

#### Percent Minority



0 2.5 5 7.5 10  
Miles



<http://gis.leg.mn>

July 2012

Base data and features used on this map are derived from the 2010 TIGER files prepared by the U.S. Census Bureau.

EBL & Asthma data provided by Minnesota Department of Health

\* Asthma data is an average annual rate between 2004 and 2006. If 20 or fewer cases occurred, the rate was not calculated.

Arsenic data provided by the U.S. Environmental Protection Agency.